

**CCS Technical Documentation
NSB-9 Series Transceivers**

**Disassembly and Assembly
Instructions**

Table of Content

| | Page No |
|--------------------------------|----------------|
| Disassembly Instructions | 3 |
| Exchange of dome sheet | 8 |

Disassembly Instructions



Protect LCD window to avoid dust and scratches.



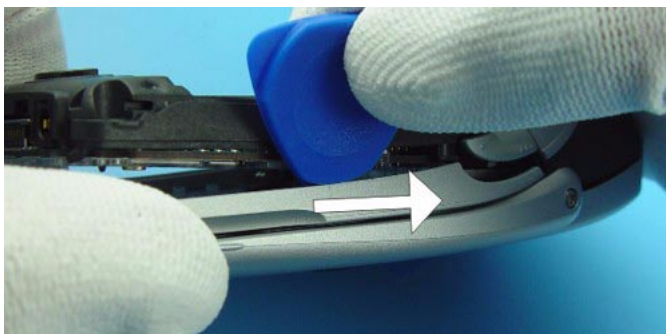
Press Release Button before removing Battery Cover.



Unscrew the two TORX PLUS® size 6 screws using the order shown. **For assembly, the reverse order and a torque of 17Ncm have to be used.**



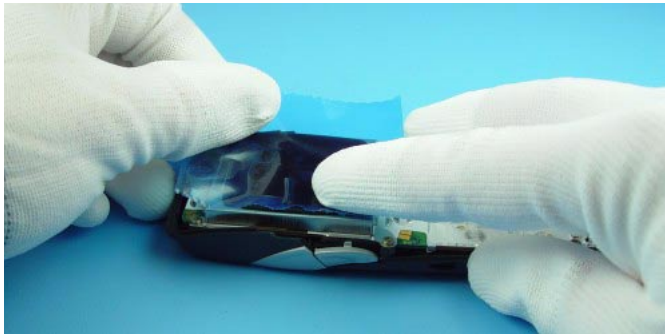
Place the SRT-6 between B-Cover and A-Cover and shift it carefully as shown in the picture. Note the correct position of the SRT-6, the tip should not touch the PWB.



Now, the same procedure on the other side.



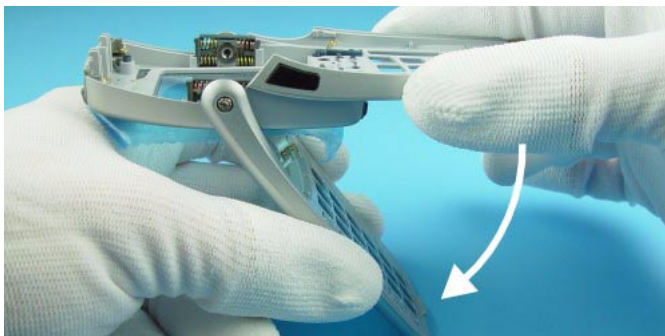
Separate the modules.



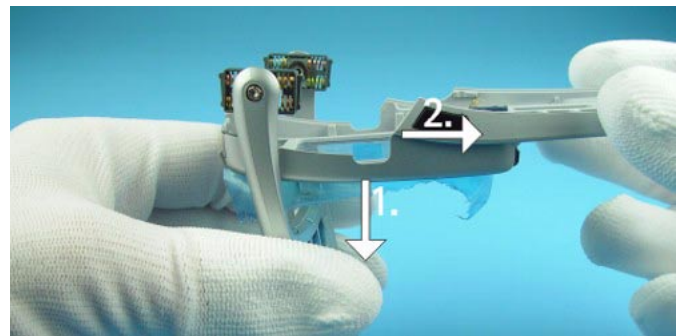
Protect LCD to avoid dust and scratches.



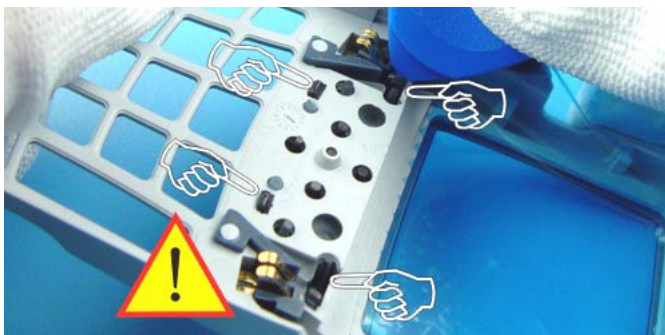
Keypad drops out when turning A-Cover.



Open the Flip Cover.



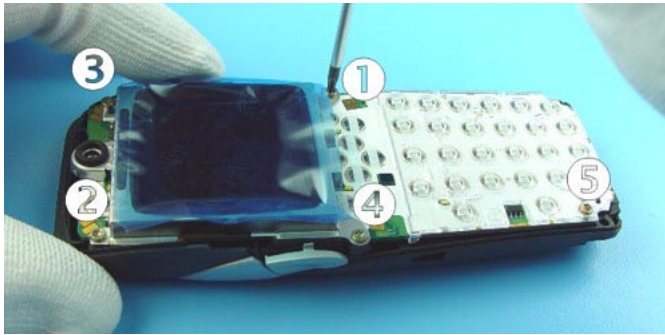
Separate A-Cover from Flip Cover as shown in the picture. Note the right position of the Flip Hinges on reassembly.



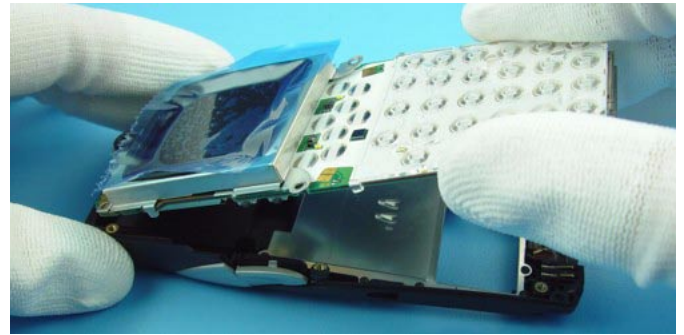
Function Keys are attached with four snaps to A-cover. Use SRT-6 to release the snaps. Take care not to damage the spring contacts.



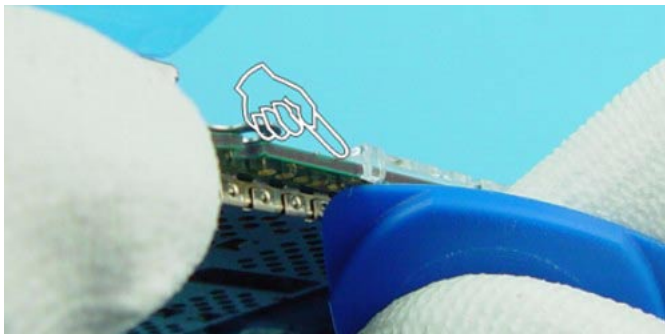
Remove Function Keys if needed. Use always new keys in reassembly!



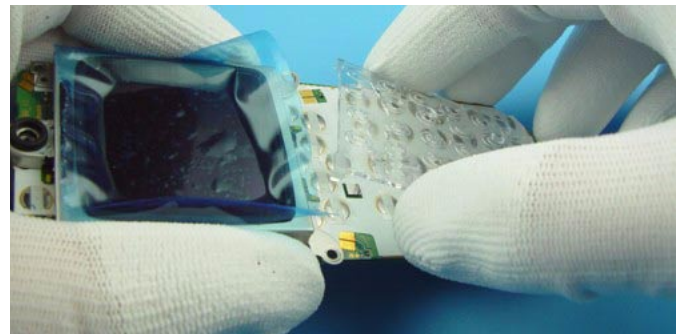
Unscrew the five TORX PLUS® size 6 screws using the order shown. **For assembly, the reverse order and a torque of 17Ncm have to be used.**



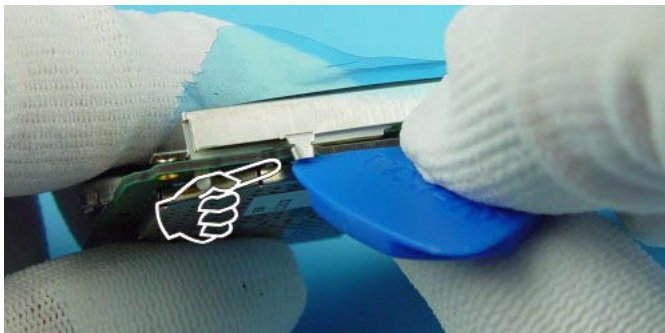
Lift the engine from B-Cover.



Open the Light Guide snaps.



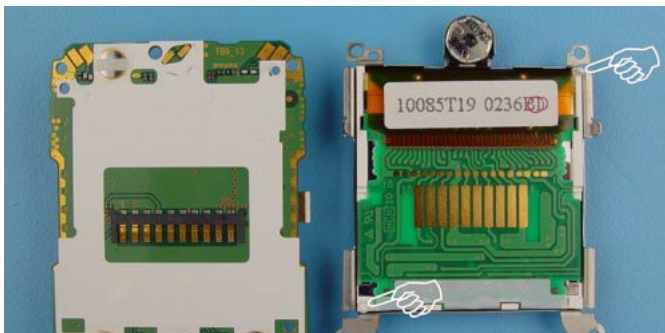
Remove the Light Guide.



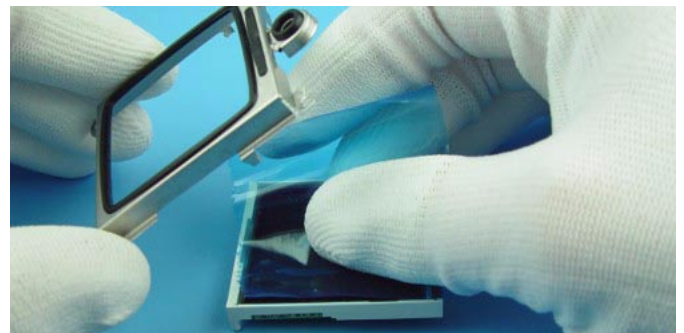
The LCD Metal Frame is attached with snaps to the Radio Module on both sides.



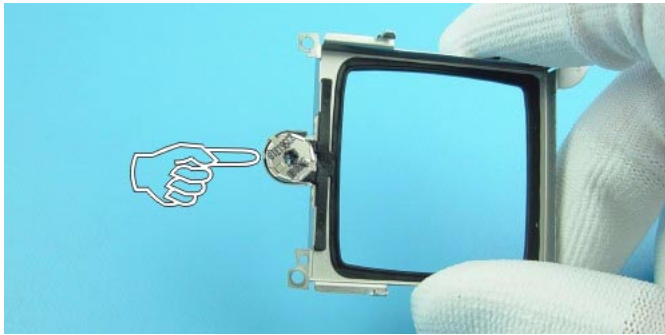
Release the snap on the other side of the engine and take away the LCD Module.



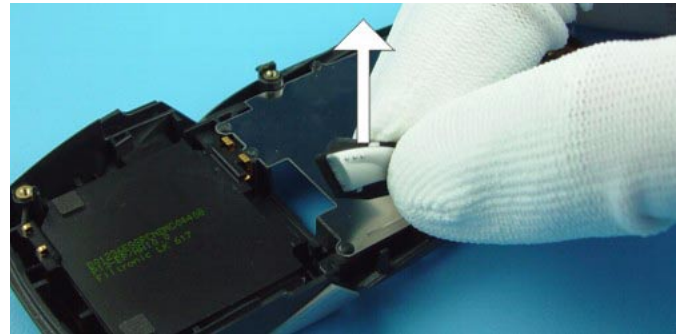
Note the right position of the LCD Module in LCD Metal Frame when assembling. Also take care not to damage the LCD spring contacts of Radio Module.



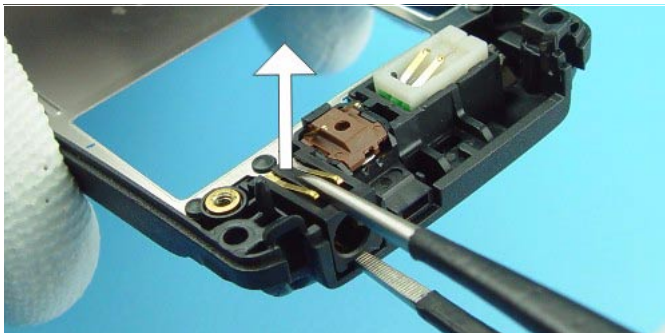
Separate the LCD Metal Frame from LCD Module and protect the LCD window again.



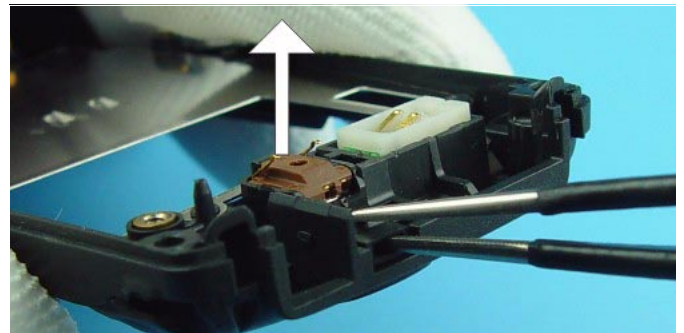
Do not remove the Earpiece from the LCD Frame, as they are supplied as one part.



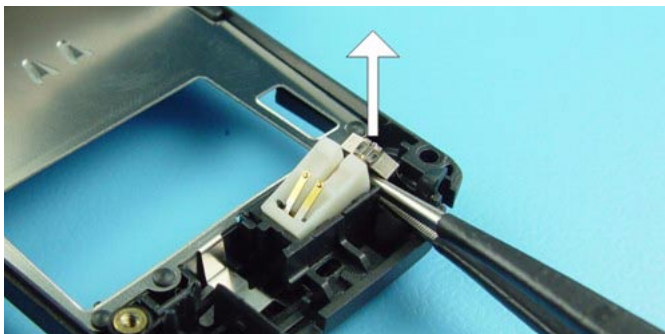
Volume Key can be removed easily.



To remove the DC Jack, place tweezers between the spring contacts and under the Jack. You'll need to use additional force to pull the Jack upwards.



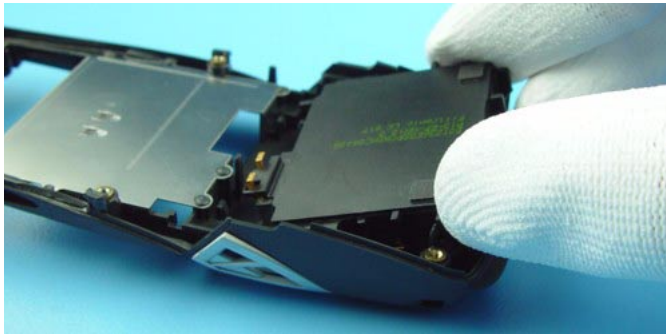
Use tweezers to pull up the Microphone.



Remove the Vibra Motor from its guidance.



Place the SRT-6 between the spring contacts and lift up the Antenna carefully. Do not damage the spring contacts and the Antenna Radiator when removing the Antenna.



Remove the Antenna from B-Cover.

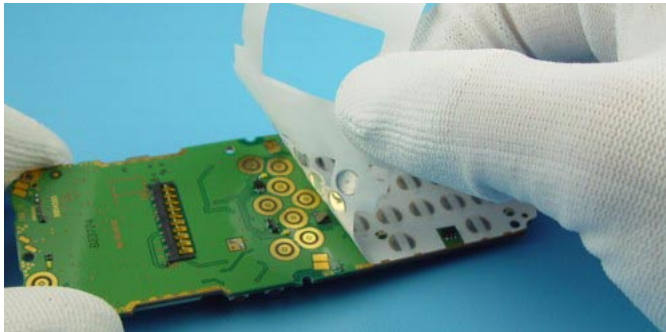


The Logo Bracket is attached with snaps to the B-Cover. Take care not to break the snaps when releasing the Bracket.

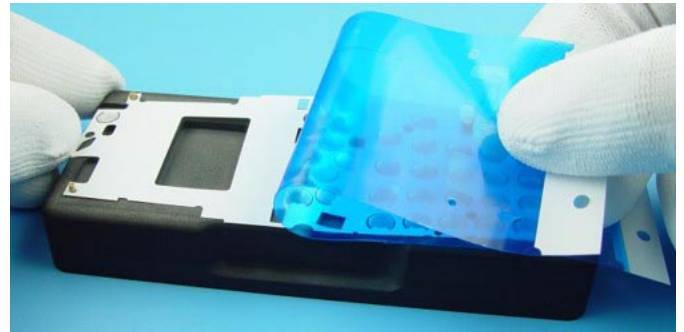


After releasing of the snaps, the Logo Bracket can be removed.

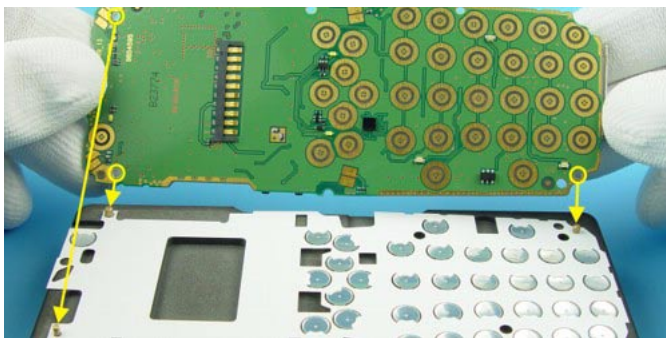
Exchange of dome sheet



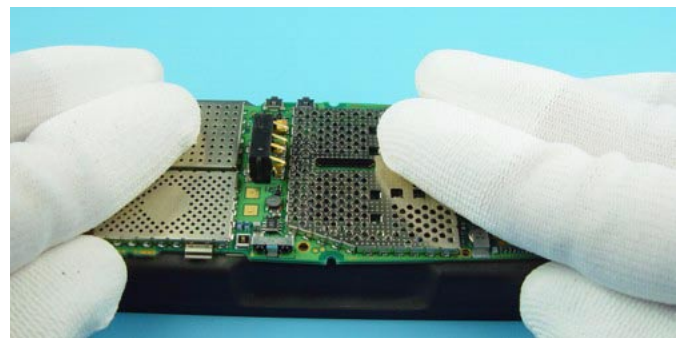
Remove the defective Dome Sheet carefully.



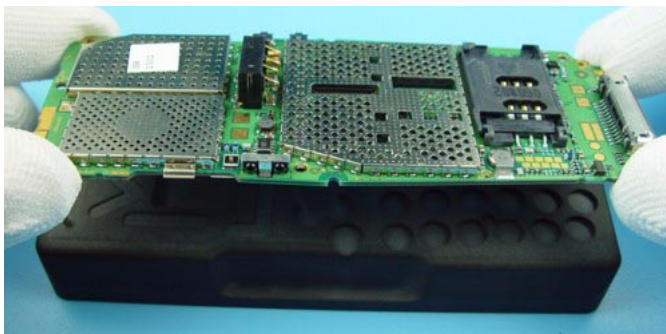
Put the new Dome Sheet onto the Dome Sheet Assembly Jig. Note the guiding pins.



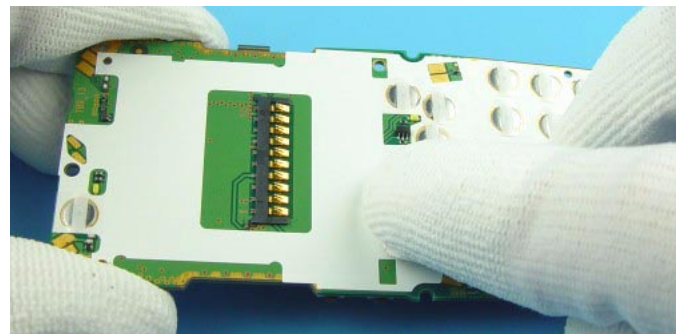
Place the Radio Module on the Jig.



Press on the Radio Module evenly.



Lift the Radio Module with the new Dome Sheet from the Jig.



Check that the Dome Sheet is correctly stuck to the Radio Module. Do not damage the spring contacts of LCD.